

Vimeccanica s.r.l.

Via Albenga, 65

10090 Rivoli

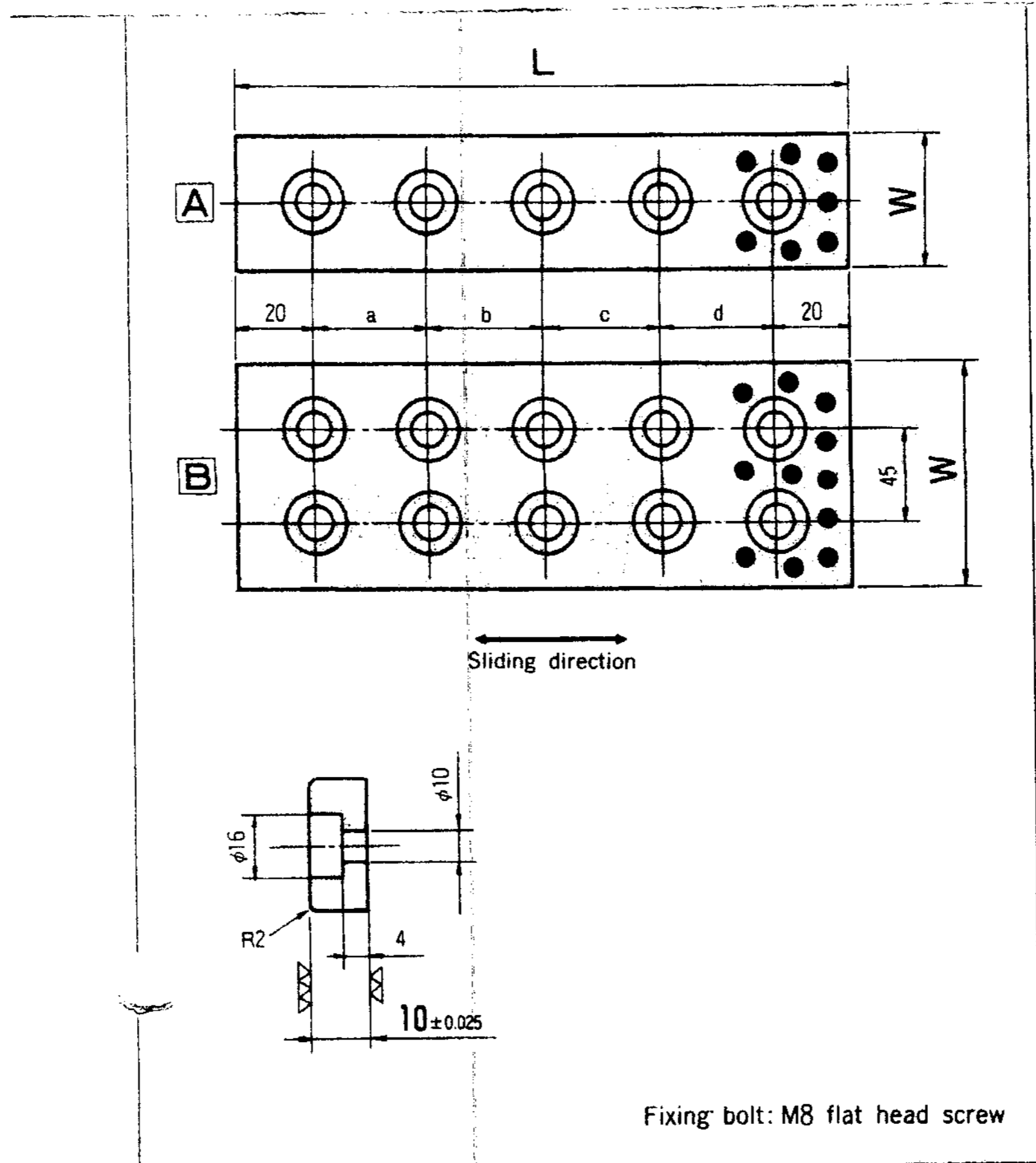
Tf. +39 0119539596

Fax +39 0119539503

vimeccanica@vimeccanica.it



ERRATA CORRIGE COD.79110



Standard No.	W	L	Bolt location				Bolt		Sketch	Code No.
			a	b	c	d	Type	Q'ty		
SOLP-35x100	35	100	60	—	—	—	M8	2	A	1V01
SOLP-35x150		150	55	55	—	—		3		1V02
SOLP-35x200		200	55	50	55	—		4		1V03
SOLP-35x250		250	70	70	70	—		4		1V04
SOLP-35x300		300	65	65	65	65		5		1V05
SOLP-35x350		350	80	75	75	80		5		1V06
SOLP-50x100	50	100	60	—	—	—	M8	2	A	1V30
SOLP-50x150		150	55	55	—	—		3		1V31
SOLP-50x200		200	55	50	55	—		4		1V32
SOLP-50x250		250	70	70	70	—		4		1V33
SOLP-50x300		300	65	65	65	65		5		1V34
SOLP-50x350		350	80	75	75	80		5		1V35
SOLP-75x150	75	150	110	—	—	—	M8	4	B	1V40
SOLP-75x200		200	80	80	—	—		6		1V41
SOLP-75x250		250	105	105	—	—		6		1V42
SOLP-75x300		300	85	90	85	—		8		1V43
SOLP-75x400		400	120	120	120	—		8		1V44
SOLP-75x500		500	115	115	115	115		10		1V45